



HDanywhere HDMI Matrix Driver

HKHA818SW
HKHA414SW
HKHA414SW_v2
HKM44

For use with:



Driver software written and provided by:



HDanywhere / Control4 Driver for HD Matrix Switches

Contents:

- Page 3 - Introduction
- Page 3 - Control4 Configuration
 - Add the driver to your project
 - Make connections
- Page 5 - Troubleshooting
 - Note on feedback

HDanywhere / Control4 Driver for HD Matrix Switches

Introduction

This is a reference manual to describe the interface provided between a Control4 system and a **HDanywhere HDMI Matrix Switch** through a serial port (**RS232**). The drivers support HKM44, HKHA414SW, HKHA414SW_v2 and HKHA818SW models.

This module was written and tested using Composer version **2.2.4** running on an HC-200B controller.
The driver version is currently **v300**.

NOTE: The HDanywhere drivers are configured with a baud rate of 600 and the HC-800 does not support this baud rate.

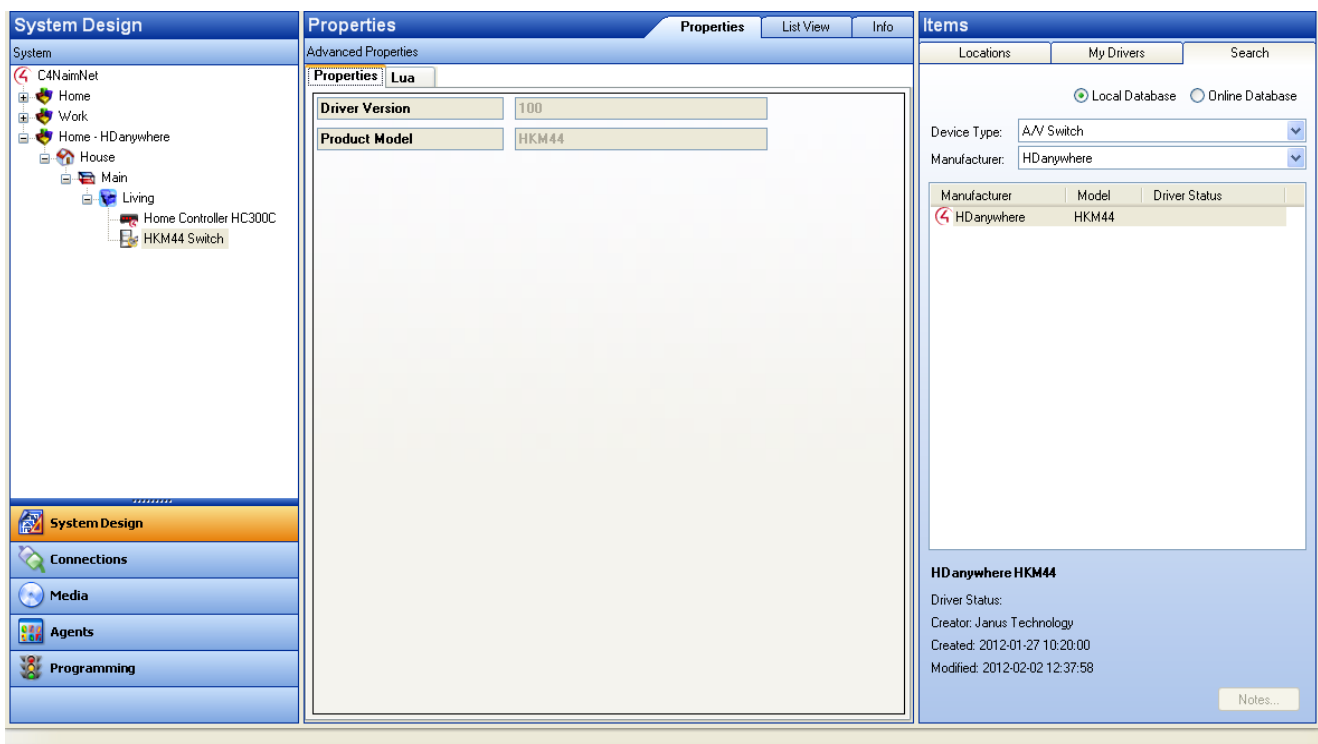
Control4 Configuration

Add the driver to your project

Copy the .c4i files from the zip package to
My Documents\Control4\Drivers

Open Composer

The driver can be found under Device Type : AVSwitch – Manufacturer : HDanywhere
It will appear as an <model-number> Switch as shown below.



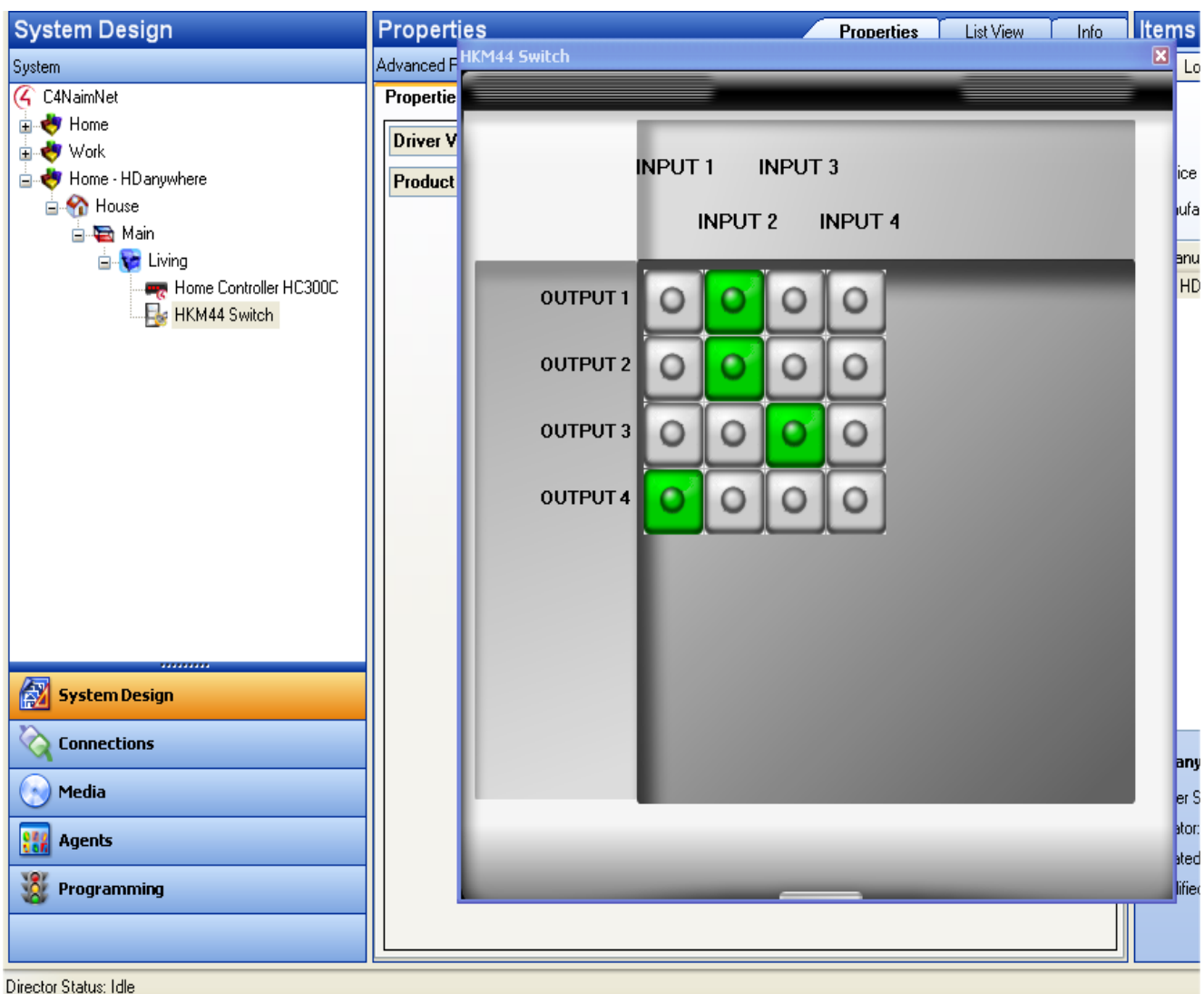
HDanywhere / Control4 Driver for HD Matrix Switches

Make connections

Configure the matrix connections as per standard Control4 practice. It is necessary to make connections to the serial port (for control) and as many HDMI input/output ports as the project uses. A female to female straight-through cable is required to connect the serial Control4 port to the HDMI matrix. Female to female cables are typically null modem; in this case, a cross over adapter will be required.

Note that the matrix additionally exposes audio input/output – these are to be ignored – they are only present so that the matrix feeds back correct status to the test mode.

Double-click the switch icon in System Design and a control window will appear.



Troubleshooting

Note on feedback

The HKHA414SW_v2 matrix switch provides feedback and local switch changes made will be reflected by Control 4. The HKM44, HKHA414SW and HKHA818SW HDMI Matrix switches provide no feedback on switching. So the feedback provided by this driver is based on the commands received from the Control4 system. This means that on start-up, the feedback may not reflect the true status of the switch. Furthermore, if any local changes are made directly to the switch, these will not be reported to the Control4 system.