



## HDanywhere HDMI Matrix Switch Driver

HKHA414SW

HKM44

HKM88

For use with:



## Driver software written and provided by

### Contents:

- Page 3 - Introduction
  - Example Configuration
- Page 4 - Crestron Serial Comms Configuration
  - Crestron Configuration
- Page 5 - Parameter Properties
- Page 6 - Demo Panel
- Page 7 - Troubleshooting

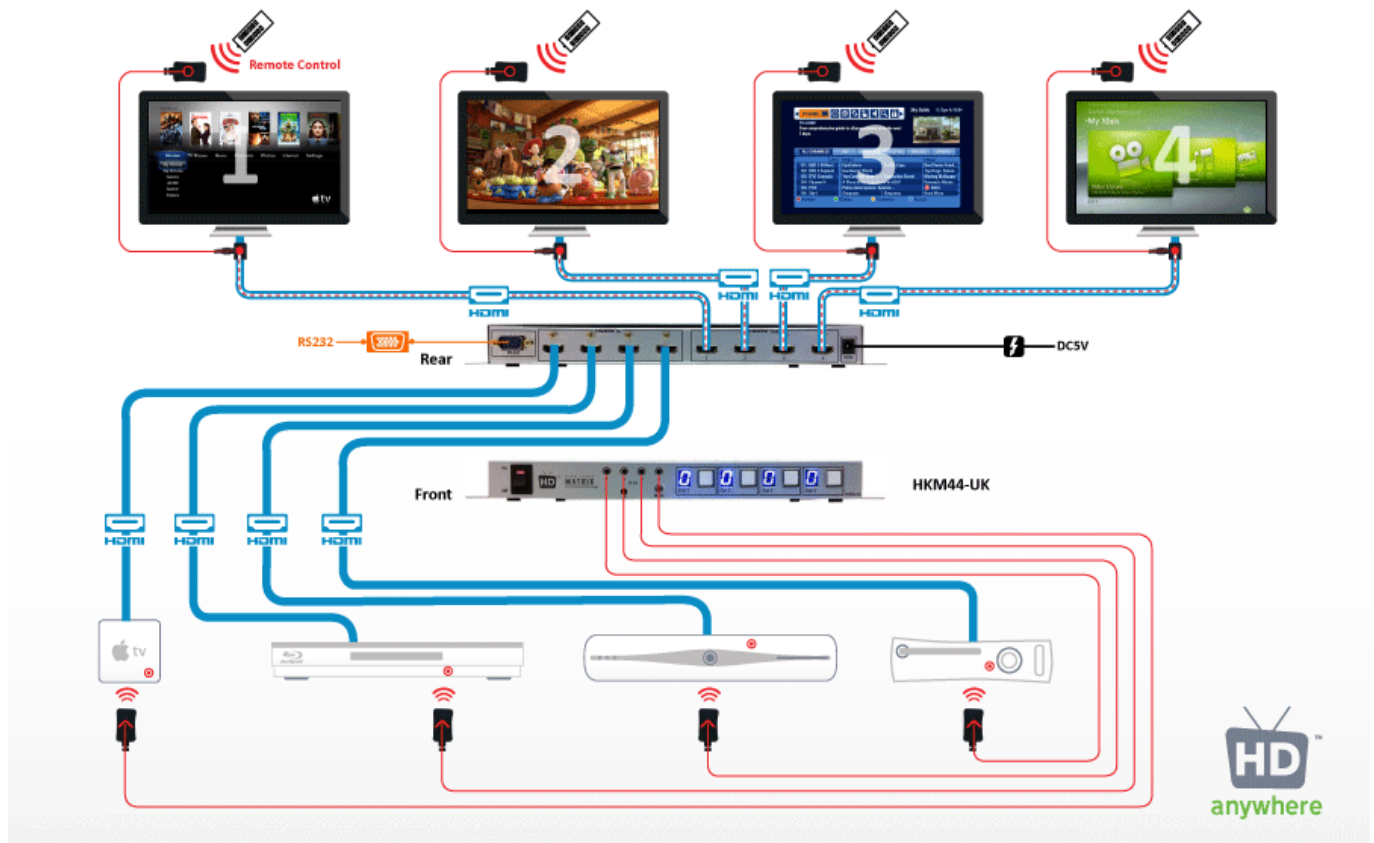
# Introduction

This Crestron module is based on the 4x4 and 8x8 HDMI Matrix switch and has been tested against the HKM44-UK , HKHA414SW and HKM88 HDMI switches. It was written and tested using Crestron SIMPL Windows version 3.02.14, SIMPL+ 3.03.16 running on a CP2e Crestron Processor.

The Crestron Processor can be used to route each channel input source to an appropriate video output using the standard A/V switch interface. In this way, the user has complete control over what is being viewed and the location of where it is watched.

Crestron Driver Version : **2.0**

## Example configuration



## Crestron Serial Comms Configuration

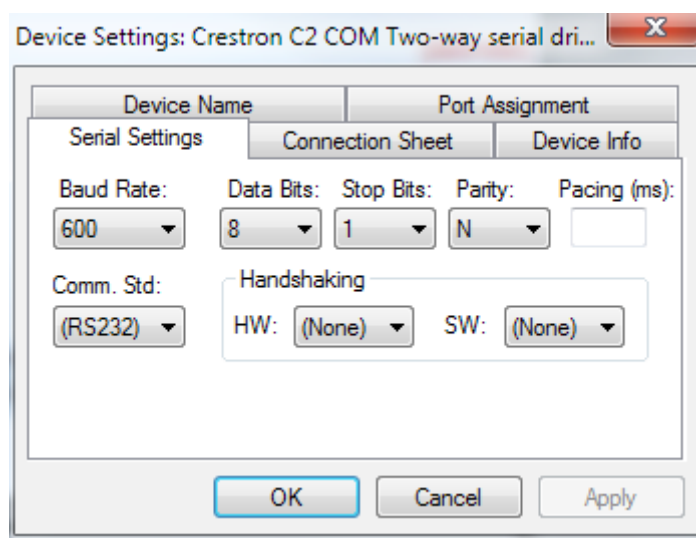
The serial port of the Crestron control unit must be connected to the serial port of the HDMI Matrix switch

## HDanywhere / Crestron Driver for HD Matrix Switches

via a female to female straight through cable. Female to female cables are typically null modem cables; in this case, a cross over adaptor will have to be used in addition.

The serial comms configuration is

Baud rate	600bps
Data bits	8 bits
Parity	None
Stop bits	1 bit
Flow control	None



HKM44

## Crestron Configuration

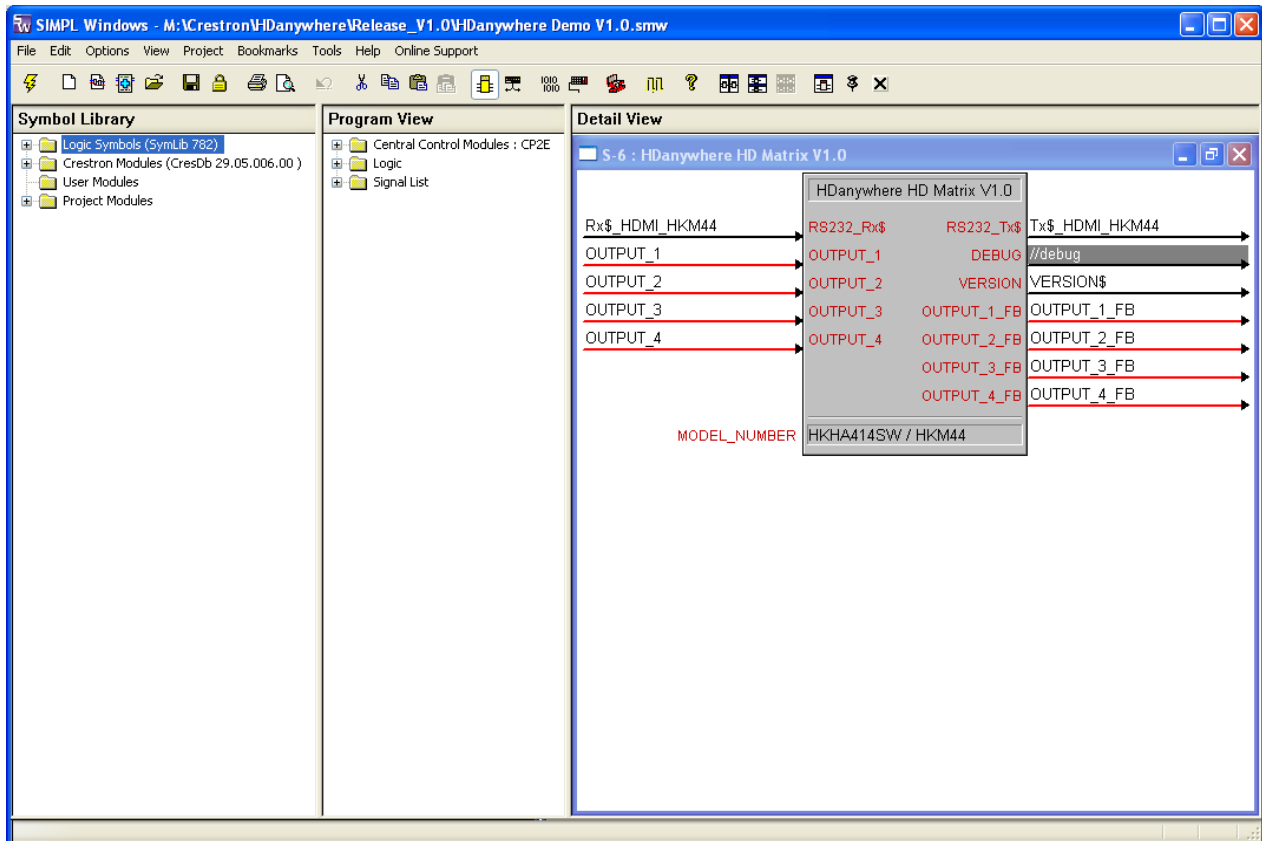
### ***Add the module to your project***

Open your Crestron Simpl Windows program. Copy the following files to the folder where your program is stored:

HDanywhere HD Matrix Vx.y.umc  
HDanywhere HD Matrix Vx.y.ush  
HDanywhere HD Matrix Vx.y.usp

and then click Tools -> Reload Device and Symbol Libraries from disk. The HDanywhere HD Matrix module will appear in your Symbol Library under Project Modules -> Switcher. The current version of the module is indicated by the **x.y** suffix. Add the module to your program.

# HDanywhere / Crestron Driver for HD Matrix Switches



## Parameter Properties

### Input to module

Name	Type	Explanation
RS232_Rx\$	STRING	String data from the receive port RS232.
OUTPUT_X	ANALOG	Sets the input number where X is valid number, range 1 to number of inputs.

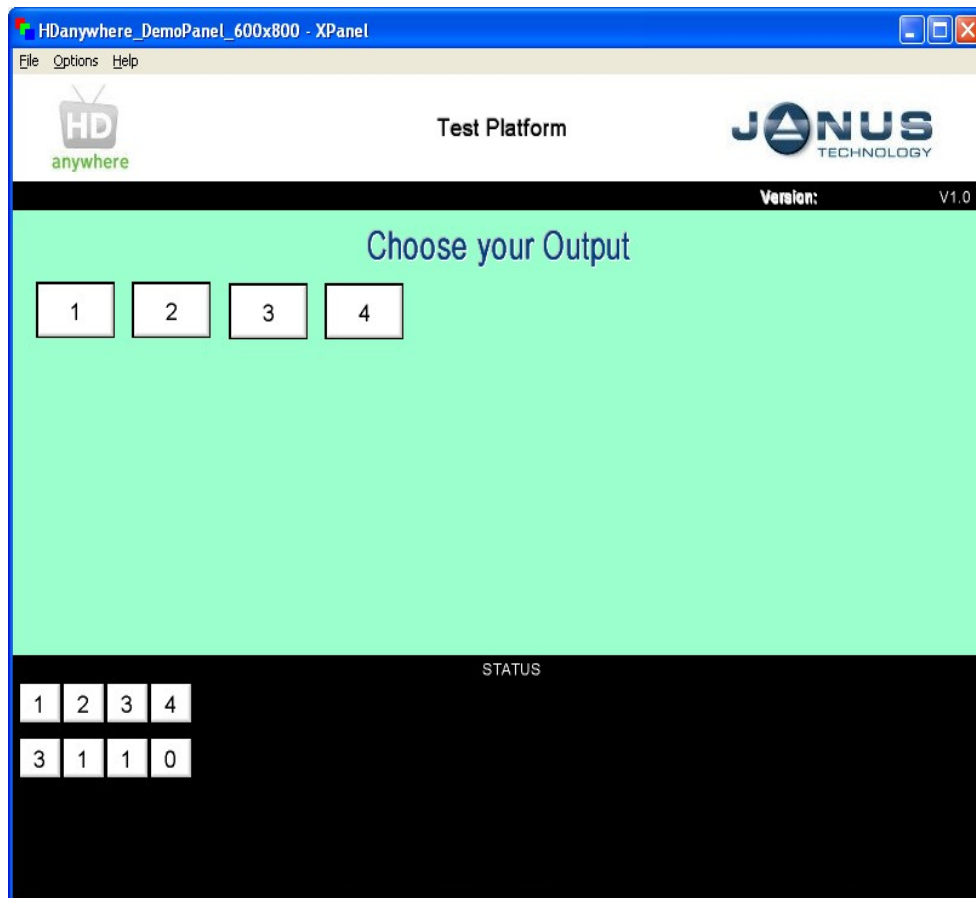
### Output from module

Name	Type	Explanation
RS232_Tx\$	STRING	Transmit port to send commands on the RS232 port.
OUTPUT_X_FB	ANALOG	Selects the input for a given output port where X is a valid number, range 1 to number of inputs.
VERSION\$	STRING	Version number of the driver.

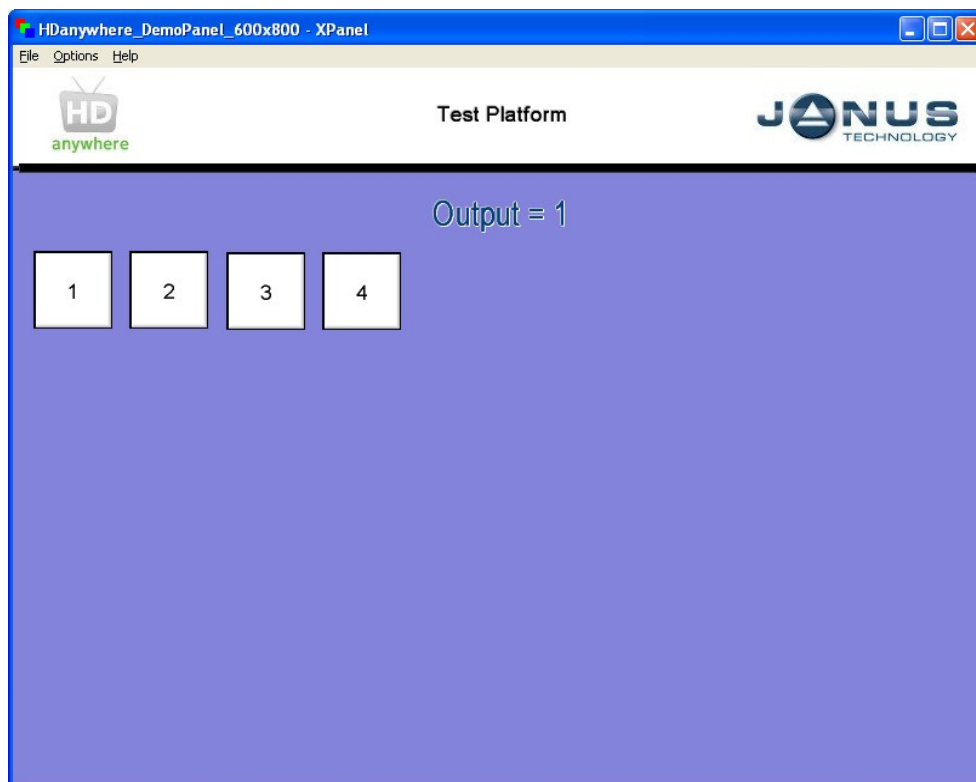
### Parameter of module

Name	Type	Explanation
MODEL_NUMBER	SELECTION	The HDMI switch model type

**Demo Panel**



Select your output port and then select your input port.



## ***Troubleshooting***

### **Note on feedback**

The HDMI Matrix switches provides no feedback on switching. This means that the feedback displayed on the status buttons of the demo panel are derived from the commands received from the Crestron system. This means that on start-up, the feedback may not reflect the true status of the switch. Furthermore, local changes made directly to the switch will not be reported.