



## HDanywhere HDMI Matrix Driver

HKHA414SW

HKHA818SW

HKM88

HKM44

HKHA414SW\_V2

For use with:



Driver software written and provided by:



## Contents:

- Page 3 - Introduction
- Page 3 - RTI Configuration
  - Add the driver to your project
  - Configuration Settings
  - T3-V - Interface
  - Downloading the Software
- Page 5 - Troubleshooting
  - Serial connection to the HD Matrix Switch
  - Note on feedback

# HDanywhere / RTI Driver for HD Matrix Switches

## Introduction

This is a reference manual to describe the interface provided between an RTI system and an **HDanywhere HDMI Matrix Switch** through a serial port (**RS232**).

This module was written and tested with the HKM44-UK HKHA414SW, HKHA414SW\_v2, HKHA818SW using Integration Designer version **8.3.1.3006** and XP firmware version **3.3 (Bootloader 1.4)**.

The driver version is 3.0.

## RTI Configuration

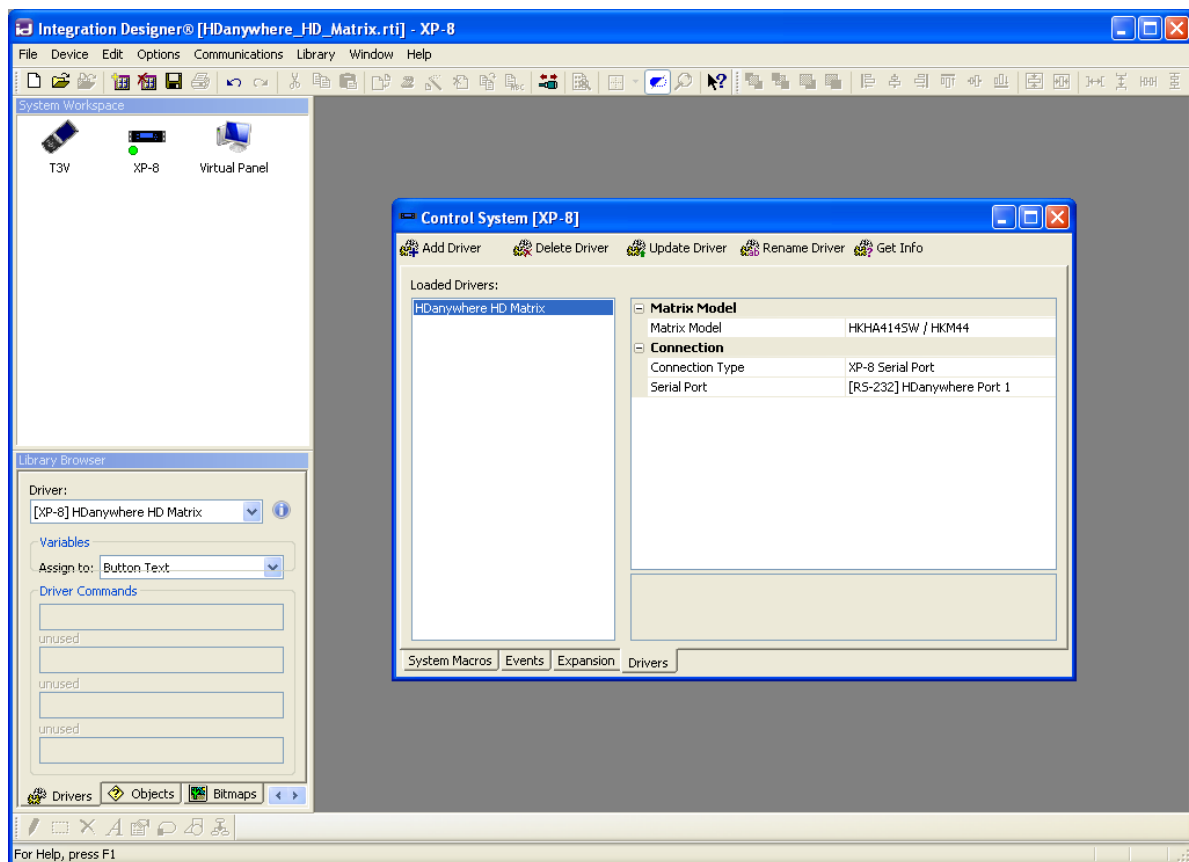
### *Add the driver to your project*

Open the RTI Integration Designer System file called HDanywhere\_HD\_Matrix.rti by double clicking on the file.

Click on the XP-8 icon in the System Workspace area to display the Control System [XP-8] window. A green circle will be displayed below the XP-8 icon in the System Workspace, denoting the current selection.

Click on the Drivers tab of the Control System window and select the Add Driver icon, to add the RTIDRIVER file called HDanywhere\_HD\_Matrix.rtiDriver. Locate the HDanywhere\_HD\_Matrix.rtiDriver file on your PC and select OPEN to add the file to the system.

The Matrix Switch driver should be displayed as a Loaded Driver. Select the driver and the configuration settings will be displayed.



## ***Configuration Settings***

### **Matrix Model**

Currently only the HKHA414SW, HKHA414SW\_V2, HKM44, HKHA818SW and HKM88 are supported. These have identical operation and can be selected by the user.

### **Connection Type**

The Matrix Switch is controlled via a serial port.

### **Serial Port**

Select the serial port on the XP-8 to which the Matrix Switch is connected.

### ***T3-V - Interface***

Click on the T3-V icon in the System Workspace and the Test Harness[T3-V] will be displayed. A default screen layout has been supplied but this can be changed to suit the user's requirements.

## **Variables**

### **Current Inputs**

This is an integer which can be displayed to indicate the current input for each output.

### **Output Port Current Selection**

This is a boolean flag for each input/output combination that can be used to change the appearance of buttons once selections have been made.

## **Commands**

### **Routing**

You can assign a command to a button to switch a given output to either a specific input number or to cycle left or right through the available inputs.

## ***Downloading the Software***

Select the Send File icon and display the Devices in the Current System window.

Set up the method of file transfer, e.g. USB or MAC addressing and download the file to the T3-V and the XP-8 by selecting the Send button. The status for each device should update to display "Up to Date".

## Troubleshooting

### ***Serial connection to the HDanywhere Matrix Switch***

A female to female straight through cable is required to connect the serial port of the RTI XP-8 with the matrix switch. Female to female cables are typically null modem and a cross over adapter will have to be used in addition.

### ***Note on feedback***

The HKHA414SW\_v2 matrix switch provides feedback so any local changes made will be reported by the RTI system. The other HDMI Matrix switches, HKM44, HKHA414SW and the HKHA818SW, provide no feedback on switching. So the feedback provided by this driver is based on the commands received from the RTI system. This means that on start-up, the feedback may not reflect the true status of the switch. Furthermore, if any local changes are made directly to the switch, these will not be reported to the RTI system.