



HDanywhere HDMI Modular Matrix Driver



For use with:

Driver software written and provided by:



HDanywhere / RTI Driver for Modular Matrix Switches

Introduction

This driver has been designed to allow an RTI system to interface with an HDanywhere Modular HDMI Matrix Switch via Ethernet.

This module was written and tested using a 4x4 Modular matrix version **1.4.17**, Integration Designer version **9.3.0.3850** and an XP6 processor running firmware version **1.9.4 (Bootloader 1.5)**.

The driver version is **v1.2**.

HDanywhere Matrix Configuration

Entering a static IP address

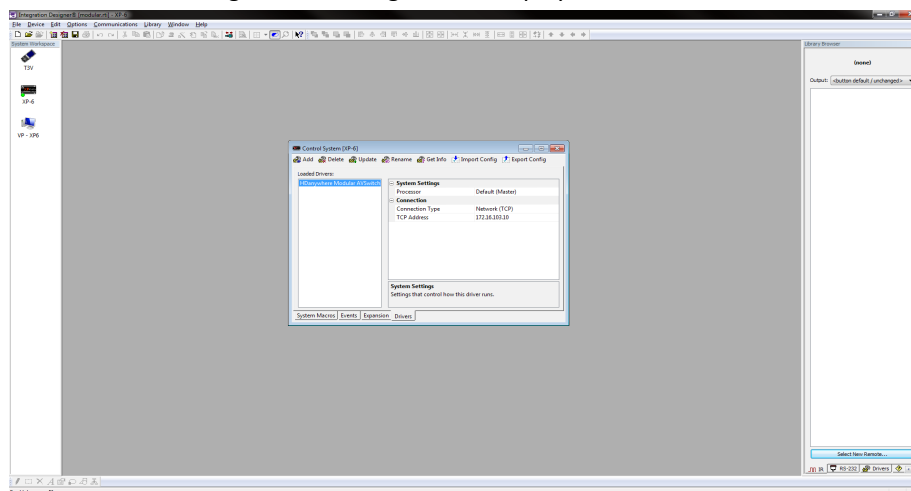
You must configure the HDanywhere Modular matrix with a static IP address on the same network as your RTI processor.

- Remove the SD card from the front of the matrix and insert it into the SD slot of a PC, or into an attached card reader.
- Choose to edit the **settings.ini** file, using Notepad or similar text editing software.
- Edit the **[Network]** section, entering your static IP details.
- Save the file, remove the card from your PC and re-insert it into the matrix.

RTI Configuration

Adding the driver to your project

- Open your RTI Integration Designer System file (an example file is included with the driver entitled “HDanywhere_Modular.rti”).
- Click on the processor icon in the **System Workspace** area to display the **Control System** window. A green circle will be displayed below the processor icon in the **System Workspace**, denoting the current selection.
- Click on the **Drivers** tab of the **Control System** window and select the **Add** icon, to add a new driver. Locate the “HDanywhere_Modular.rtiDriver” file on your PC and select **Open** to add the file to the system. The **HDanywhere Modular AVSwitch** driver should be displayed in the **Loaded Drivers** list.
- Select the driver and the configuration settings will be displayed, as below:



HDanywhere / RTI Driver for Modular Matrix Switches

Configuration Settings

The following settings are available within the driver.

Processor

Choose the processor from which commands will be sent.

Connection Type

The Matrix Switch is controlled via TCP.

TCP Address

Enter the IP address of the HDanywhere modular matrix.

Commands

Routing Commands

Routing commands are used to switch specific inputs to given outputs:

- Select your button or macro and choose to add a **Driver Command**.
- Choose **HDanywhere Modular AVSwitch → Output Routing → Routing** from the list.
- Enter the required numbers in the **Input** and **Output** fields.
- Drag the **Add** icon or click **Ok** as appropriate.

CEC Commands

CEC commands can be used to power compatible displays on or off:

- Select your button or macro and choose to add a **Driver Command**.
- Choose **HDanywhere Modular AVSwitch → CEN Control → Display Power** from the list.
- Enter the required number in the **Output** fields, and select **On** or **Off** in the **Power** field.
- Drag the **Add** icon or click **Ok** as appropriate.

Variables

Current Inputs

This is an integer which can be displayed to indicate the current input for each output.

Output Port Current Selection

This is a boolean flag for each input/output combination that can be used to change the appearance of buttons once selections have been made.

Events

A driver event can be raised when an output changes to a different input.

Troubleshooting

No communication

Ensure that the matrix is configured with a static IP address in the same range as the RTI processor and that both devices are correctly connected to the network.